

Cutting Machine Network (RTMS)



Making your work easy



573 Route 30, Imperial, Pennsylvania

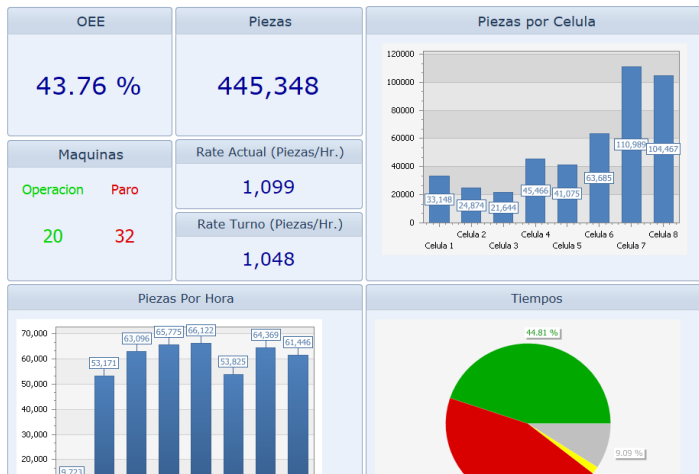


Tel: 724-695-2829



e-mail: support@cs-technologies.com
web page: www.cs-technologies.com

RTMS is a powerful network system for automatic wire processing machines



Real time data displayed in simple easy to interpret graphics. It's easy to spot machines in jeopardy of not meeting production goals.

Model	Circuit Cut	Net Cutting Time(hrs.)	Total Down Time(hrs.)	Total Defects	Availability	Efficiency	Quality	OEE
Komax Alpha 433	10008	3.17	4.31	4	53.98 %	82.45 %	99.96 %	44.48 %
Komax Alpha 433	8505	3.26	3.06	21	70.96 %	64.61 %	99.77 %	45.74 %
Komax Alpha 433	7748	2.89	4.32	1	51.82 %	79.33 %	99.99 %	41.10 %
Komax Alpha 433	6031	2.35	4.27	78	52.22 %	65.48 %	98.72 %	33.76 %
Komax Alpha 433	6950	2.68	3.25	33	66.24 %	59.75 %	99.67 %	39.45 %
Komax Alpha 433	5941	2.70	4.17	58	50.91 %	77.73 %	99.03 %	39.19 %
Komax Alpha 433	8417	2.85	3.36	1	67.10 %	60.21 %	99.99 %	40.40 %
Komax Alpha 433	4364	2.17	5.44	47	37.88 %	80.51 %	99.09 %	30.22 %
Komax Alpha 477	122	0.05	11.84	0	11.96 %	10.78 %	100.00 %	1.29 %
Komax Alpha 433	5008	1.61	5.19	15	40.56 %	55.97 %	99.70 %	22.63 %
Komax Alpha 433	2794	1.21	6.21	41	26.82 %	63.54 %	98.83 %	16.84 %
Komax Alpha 433	896	0.41	2.73	2	12.94 %	49.76 %	99.78 %	6.42 %
Komax Alpha 411	7076	2.26	4.77	11	47.42 %	66.91 %	99.84 %	31.68 %
Komax Alpha 411	5870	2.65	4.30	30	52.64 %	70.71 %	99.49 %	37.04 %
Komax Alpha 411	8142	2.77	4.39	19	52.04 %	75.02 %	99.55 %	38.86 %
Komax Alpha 411	5674	1.88	4.67	0	48.22 %	54.91 %	100.00 %	26.48 %
Komax Alpha 411	7894	3.40	3.62	26	62.88 %	76.08 %	99.35 %	47.53 %
Komax Alpha 411	9657	3.10	3.76	30	39.45 %	73.77 %	99.36 %	43.57 %
Komax Alpha 411	7718	3.34	4.14	57	55.90 %	84.20 %	98.66 %	46.44 %
Komax Gamma 263	6442	4.05	3.63	87	54.62 %	104.58 %	98.59 %	56.31 %
Komax Gamma 263	15134	5.86	3.19	4	69.15 %	119.35 %	99.97 %	82.51 %
Komax Gamma 263	7360	3.56	3.91	136	57.73 %	86.87 %	98.32 %	49.31 %
Schleuniger CC64	6870	2.24	4.01	1723	37.78 %	54.47 %	79.95 %	25.16 %

- Adaptable to all makes and models of automatic wire processing machines, new or old
- PC and PLC installed at every cutting machine
- Wireless barcode scanner at each machine to scan worker ID, wire P/N, terminal P/N, applicator ID, seal P/N
- Crimp height micrometers at each cutting machine for setup validation and periodic measurements during the production
- Groups of cutting machines share a pull tester for setup validation and periodic measurements during production
- Groups of cutting machines share a cross section station for setup validation
- When terminals run out the terminal P/N must be scanned again
- When wire runs out the wire P/N from the new barrel must be scanned
- Number of crimps made with each applicator is monitored to know when its time to change crimp tools
- Work orders automatically scheduled at each cutting machine based on real time wire bundle usage
- Critical production data collected and displayed in real time
- Quality alerts and other warnings available to the operator including when the next cross section picture is required and when tool changes are required

Querétaro, México: Alejandro Montelongo
amontelongo@cs-technologies.com
Mobile: (521) 442-322-3917

Chihuahua, México: José Cazares
jcazares@cs-technologies.com
Mobile: (521) 656-626-6188

Juárez, México: Carlos Torres
ctorres@cs-technologies.com
Mobile: (521) 656-638-9502

